

VENT-O-MAT

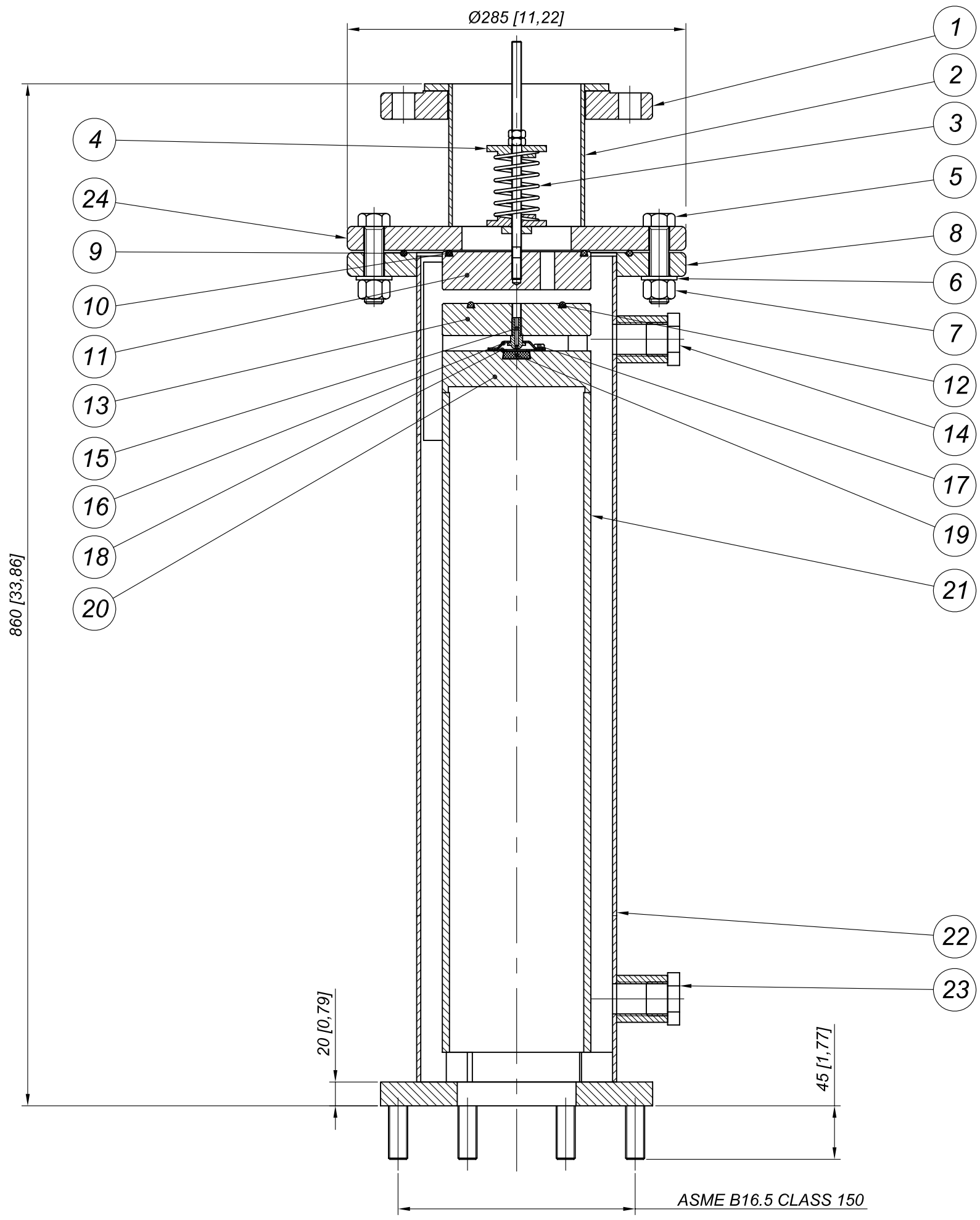
32 Lincoln Road, Benoni South
P.O. BOX 5064, Benoni South,
1502
Tel: (011) 748 0200
Fax: (011) 421 2749

TITLE:
DN100 (4") - PN10 VENT-O-MAT
SERIES RGX DBL ACTING AIR VALVE

DRAWN: D.D. DATE: 12/05/2008 CHECKED: B.H. DATE: 12/05/2008

SCALE: 1:4
PROJECTION: 1 ST. ANGLE 3 RD. ANGLE

REV.	DATE	SIGN	DESCRIPTION



NOTE:
1. DIMENSIONS IN BRACKETS ARE IN INCHES.

DN mm (in)	MODEL No.	WEIGHT kg (lbs)
100(4")	100 RGXbs 1031	38 (84)

ITEM	QTY	DESCRIPTION	MATERIAL
1	1	ASME B16.5 CLASS 150 FLANGE	S/STEEL 304
2	1	UPPER FLANGE ASSY.	S/S 304
3	1	BIAS MECH SPRING	S/S 304
4	1	LOCATING LUGS	S/S 304
5	8	M16 x 65 HEX SET SCREW	S/S 304
6	8	M16 WASHERS	S/S 304
7	8	M16 NUTS	S/S 304
8	1	100RGX SLIP ON FLANGE	S/S 304
9	1	190 x 5 O-RING SEAL	E.P.D.M.
10	1	105 x 5 O-RING SEAL	E.P.D.M.
11	1	100RGX ANTI SHOCK FLOAT	H.D.P.E.
12	1	70 x 5 O-RING SEAL	E.P.D.M.
13	1	100RGX UPPER FLOAT	H.D.P.E.
14	1	1" NPT GAUGE PORT C/W NUT	S/S 304
15	1	050RGX NOZZLE	S/S 304
16	1	NOZZLE SEAT ATTACHMENT BRACKET	S/S 304
17	3	M5 x 20lg CHEESE HEAD	S/S 304
18	1	NOZZLE SEAT RETAINER PLATE	S/S 304
19	1	050 NOZZLE SEAT	NATURAL RUBBER
20	1	100RGX LOWER FLOAT	H.D.P.E.
21	1	080RGX LOWER TUBE	H.D.P.E.
22	1	080RGX BARREL 10 BAR	S/S 304
23	1	1" NPT PRESSURE RELIEF PORT C/W NUT	S/S 304
24	1	100RGX UPPER FLANGE	S/S 304

TYPE: 100 RGX 1031
100RGXbs101S4FS2Y
DRG No./GA REF No.
SHEET: 1 OF 1

ASME B16.5 CLASS 150