

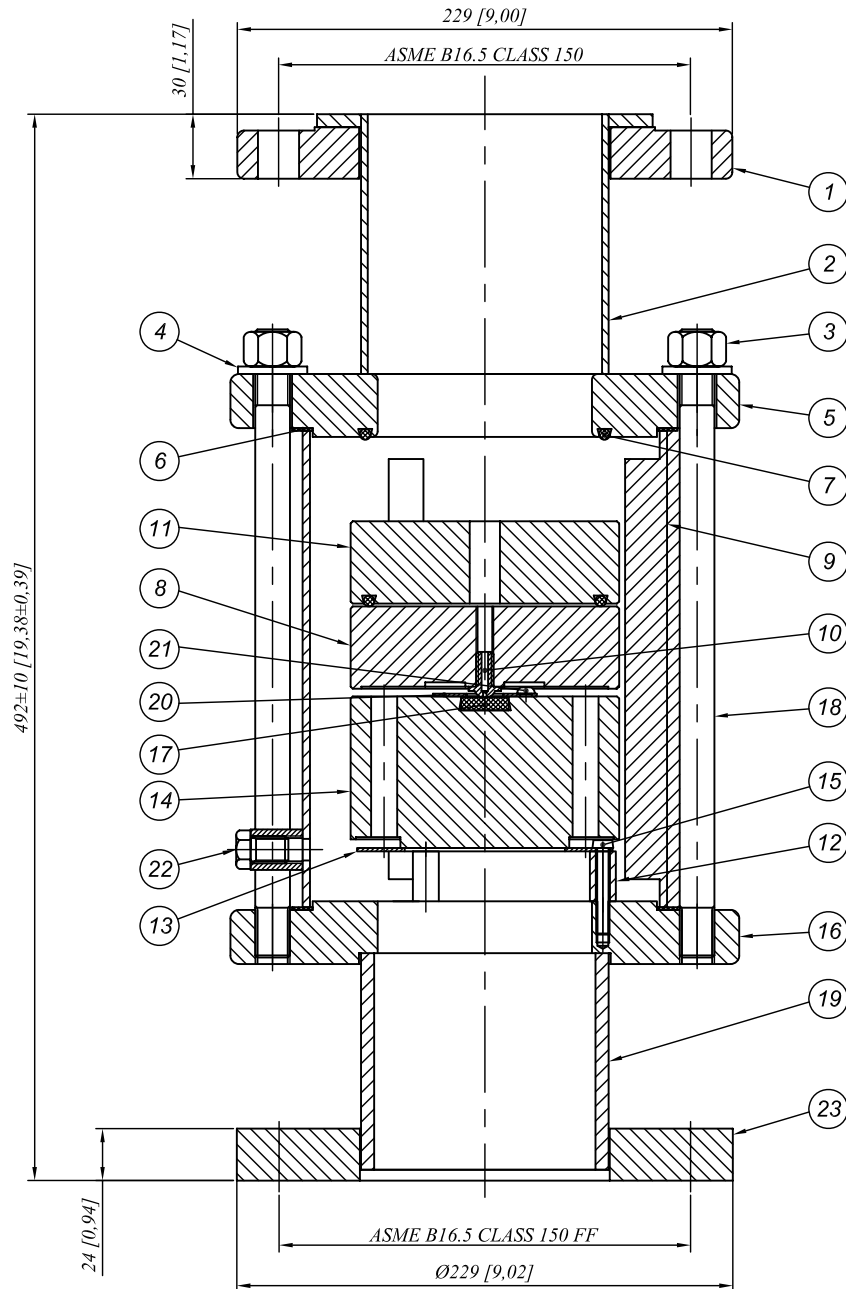
TITLE:
**DN100 (4") - PN25 (363PSI) VENT-O-MAT
RBX SERIES DBL ACTING AIR VALVE**

DRAWN: D.D. DATE: 30/06/2010 CHECKED: L.H. DATE: 30/06/2010

SCALE: 1:2.5 A3

PROJECTION: 1 ST. ANGLE 3 RD. ANGLE

REV. DATE SIGN DESCRIPTION



NOTE:
1. DIMENSIONS IN BRACKETS ARE IN INCHES.
2. ITEM 1 SWIVELS FOR EASE OF ALIGNMENT.

**USA MANUFACTURED FOR
A.R.R.A. REQUIREMENTS**

DN mm (in)	MODEL No.	WEIGHT ±kg (lbs)		
100(4")	100 RBXs 2531	53 (117)		
ITEM	QTY	DESCRIPTION	MATERIAL	
1	1	MATING FLANGE	M/STEEL F.B.E.	
2	1	UPPER FLANGE ASSY.	M/STEEL F.B.E.	
3	4	M16 HEX NUT	S/STEEL 316	
4	4	M16 WASHER	S/STEEL 316	
5	1	100 RBX UPPER FLANGE	M/STEEL F.B.E.	
6	2	Ø80 RBX BARREL SEAL	KLINGERSIL C4430	
7	2	105 x 5 O-RING SEAL	E.P.D.M.	
8	1	100 RBX UPPER FLOAT	H.D.P.E.	
9	1	100 RBX BARREL - 25 BAR	S/STEEL 316	
10	1	Ø80 RBX NOZZLE	S/STEEL 316	
11	1	100 RBX ANTI SHOCK FLOAT	H.D.P.E.	
12	3	100 RBX BAFFLE SPACER	ABS POLYLAC PA 737	
13	1	Ø80 RBX BAFFLE PLATE	S/STEEL 316	
14	1	100 RBX LOWER FLOAT - 25 BAR	H.D.P.E.	
15	3	BAFFLE PLATE SCREWS	S/STEEL 316	
16	1	100 RBX LOWER FLANGE	M/STEEL F.B.E.	
17	1	25 RBX NOZZLE SEAT	E.P.D.M.	
18	4	Ø80 RBX TIE RODS - 25 BAR	S/STEEL 316	
19	1	SPOOL PIECE	M/STEEL F.B.E.	
20	1	NOZZLE SEAT RETAINER PLATE	S/STEEL 316	
21	3	NOZZLE SEAT RETAINER SCREWS	S/STEEL 316	
22	1	½" NPT SOCKET WITH PLUG	S/STEEL 316	
23	1	MATING FLANGE	M/STEEL F.B.E.	

TYPE: 100RBX2531
100RBXs2531TTOY
SHEET: 1 OF 1 DRG No./ GA REF. No.