

VENT-O-MAT AIR VALVES ARE DESIGNED TO FULFILL FOUR FUNCTIONS NAMELY:  
 LARGE VOLUME AIR DISCHARGE - PIPELINE FILLING  
 PRESSURIZED AIR DISCHARGE - PIPELINE OPERATING  
 AIR INTAKE (VACUUM BREAKING) PIPELINE DRAINING  
 SURGE PROTECTION - RAPID FILLING OR COLUMN SEPARATION

© Copyright D.F.C. (Pty) Ltd.

**D.F.C. WATER**

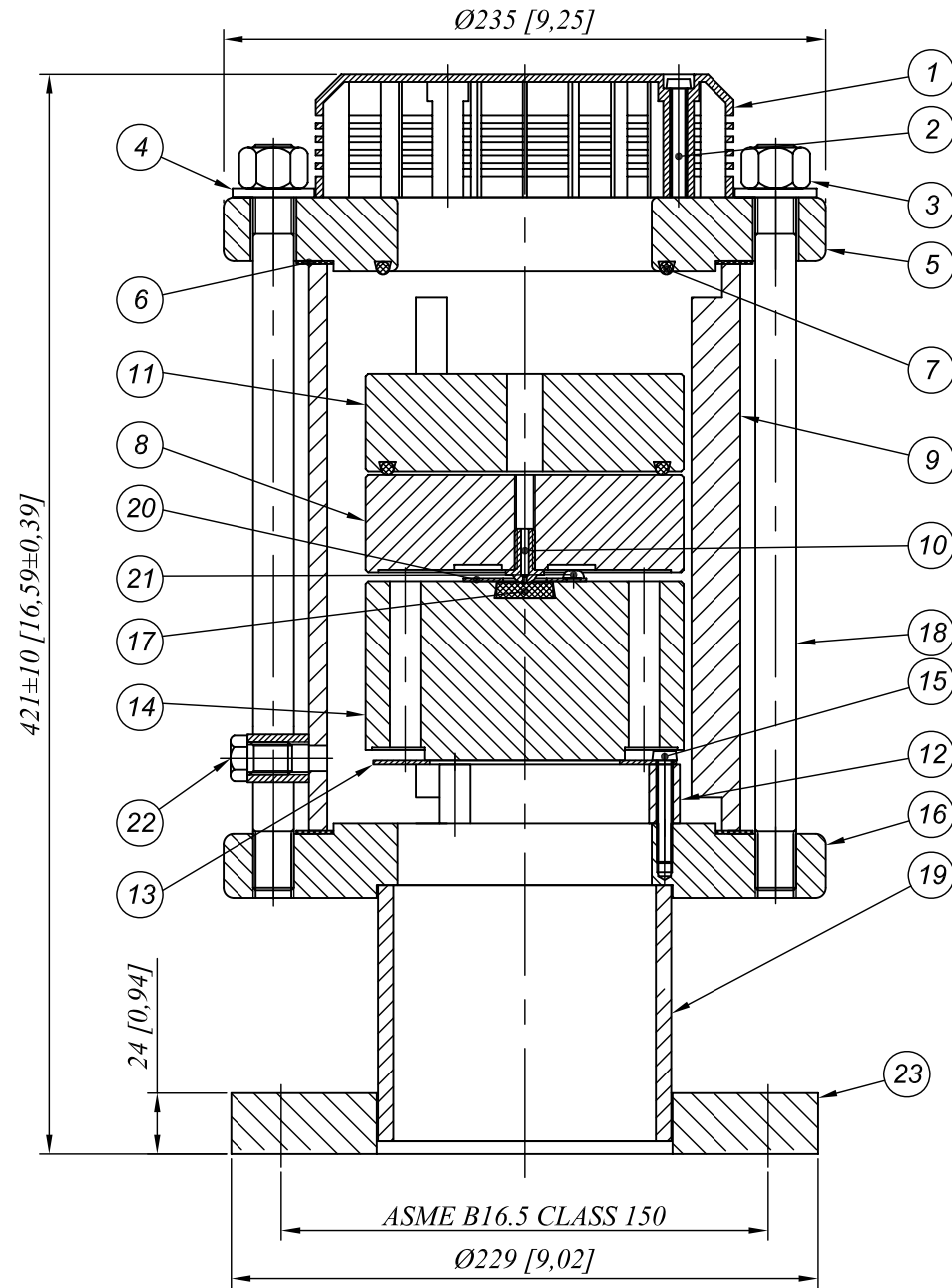
32 Lincoln Road, Benoni South  
 P.O. BOX 5064, Benoni South,  
 1502  
 Tel: (011) 748 0200  
 Fax: (011) 421 2749

TITLE:  
**DN100 (4") - PN25 VENT-O-MAT**  
**RBX SERIES DBL ACTING AIR VALVE**

DRAWN: D.D. DATE: 30/09/2010 CHECKED: L.H. DATE: 30/09/2010

SCALE: 1:3 A3  
 PROJECTION: 1 ST. ANGLE 3 RD. ANGLE

REV.	DATE	SIGN	DESCRIPTION



NOTE:  
 1. DIMENSIONS IN BRACKETS ARE IN INCHES  
 2. OPERATING PRESSURE MIN. 7PSI TO MAX 362 PSI

DN mm (in)	MODEL No.	WEIGHT ±kg (lbs)		
100(4")	100 RBX 2531	29 (64)		
ITEM	QTY	DESCRIPTION	MATERIAL	
1	1	080 RBX TOP COVER	ABS POLYLAC PA737	
2	3	TOP COVER SCREWS	S/STEEL 304	
3	8	M16 HEX NUT	S/STEEL 304	
4	8	M16 WASHER	S/STEEL 304	
5	1	100 RBX UPPER FLANGE	M/STEEL F.B.E.	
6	2	080 RBX BARREL SEAL	TEADIT NA 1002	
7	2	105 x 5 O-RING SEAL	E.P.D.M.	
8	1	100 RBX UPPER FLOAT	H.D.P.E.	
9	1	100 RBX BARREL	S/STEEL 304	
10	1	080 RBX NOZZLE	S/STEEL 316	
11	1	100 RBX ANTI SHOCK FLOAT	H.D.P.E.	
12	3	100 RBX BAFFLE SPACER	ABS POLYLAC PA737	
13	1	080 RBX BAFFLE PLATE	S/STEEL 316	
14	1	100 RBX LOWER FLOAT	H.D.P.E.	
15	3	BAFFLE PLATE SCREWS	S/STEEL 316	
16	1	100 RBX LOWER FLANGE	M/STEEL F.B.E.	
17	1	25 RBX NOZZLE SEAT	E.P.D.M.	
18	8	080 RBX TIE RODS	S/STEEL 304	
19	1	100 RBX SPOOLE PIECE	M/STEEL F.B.E.	
20	1	NOZZLE SEAT RETAINER PLATE	S/STEEL 316	
21	3	NOZZLE SEAT RETAINER SCREWS	S/STEEL 316	
22	1	½" NPT SOCKET WITH PLUG	S/STEEL 304	
23	1	MATING FLANGE	M/STEEL F.B.E.	

TYPE: 100RBX2531

100RBX25IS4T1Y

SHEET: 1 OF 1 DRG No./ GA REF No.